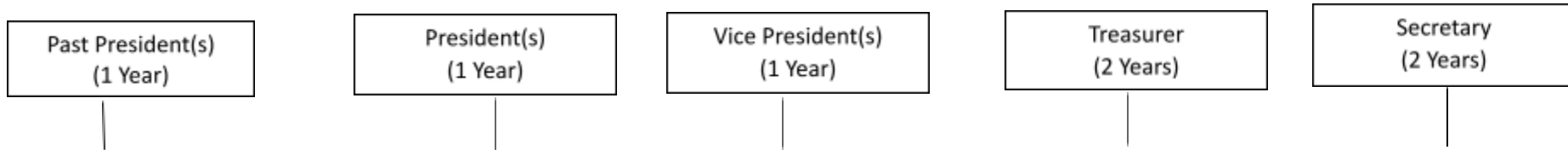


Bluewater Quilters' Guild Organizational Chart

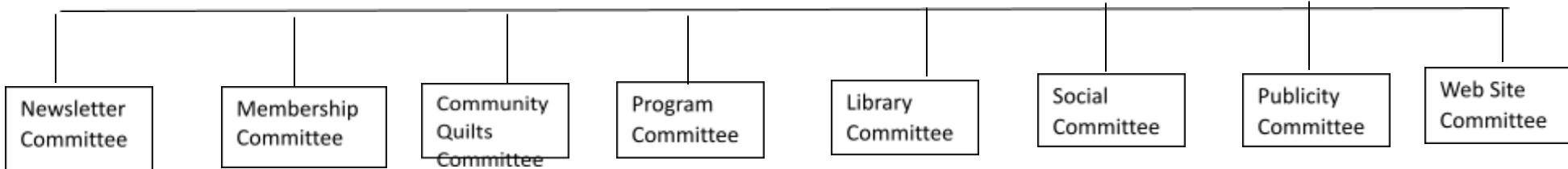
Executive Officers



Pauline's Place Committee
Made up of Executive Officers

Zoom
Coordinator

Committees



**Term of Office for all Committees is 2 Years

Fund Raising
Task Force

Special Interest
Group Facilitators

Task Force Groups are ad hoc working groups of short or long duration based on purpose of the group and the needs of the Guild.

Not all Task Force members or Zoom Coordinator are required to be members of the Executive

Special Interest Group Facilitators not required to be members of the Executive